

**ADVANCED  
MATERIALS**  
INTERFACES

Supporting Information

for *Adv. Mater. Interfaces*, DOI: 10.1002/admi.201900427

Metal–Organic Framework Coating for the Preservation  
of Silver Nanowire Surface-Enhanced Raman Scattering  
Platform

*Hongki Kim, Hyejeong Jang, Jeong Moon, Jihyun Byun,  
Jinyoung Jeong, Juyeon Jung, Eun-Kyung Lim, and Taejoon  
Kang\**

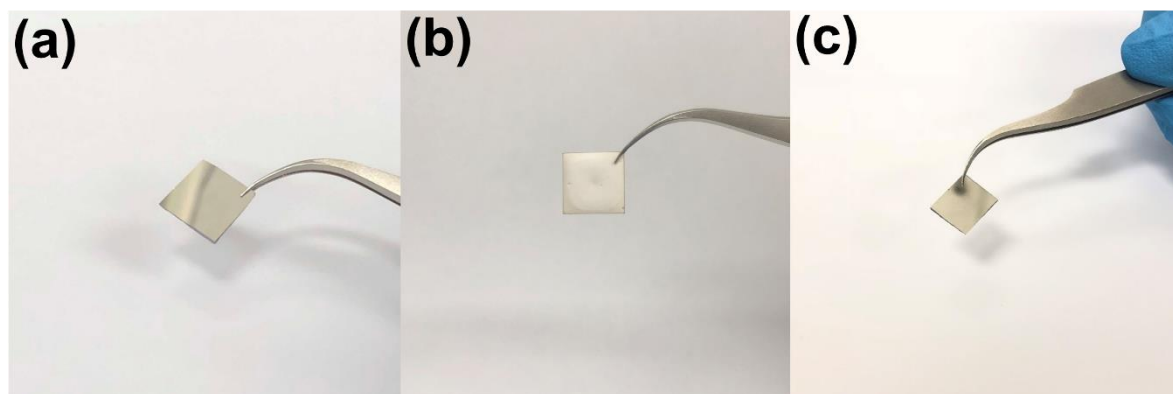
## Supporting Information

**Metal-organic Framework Coating for the Preservation of Silver Nanowire Surface-enhanced Raman Scattering Platform**

*Hongki Kim, Hyejeong Jang, Jeong Moon, Jihyun Byun, Jinyoung Jeong, Juyeon Jung, Eun-Kyung Lim, and Taejoon Kang\**

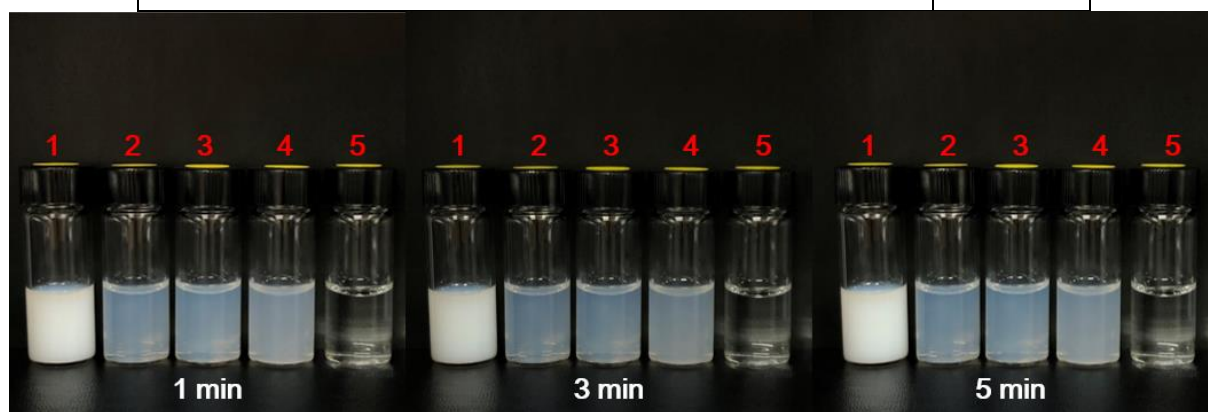
**Table S1.** All DNA sequences used in the experiments.

Name	Sequence (5' → 3')	Length (-mer)
Probe	Thiol/C6/ACATAGCACATTCGAGGTAG	20
Target	TTCCCTCACGGTACTCTACCTCGAATGTGCTATGT	35
Reporter	Cy5/AGTACCGTGAGGGAA	15

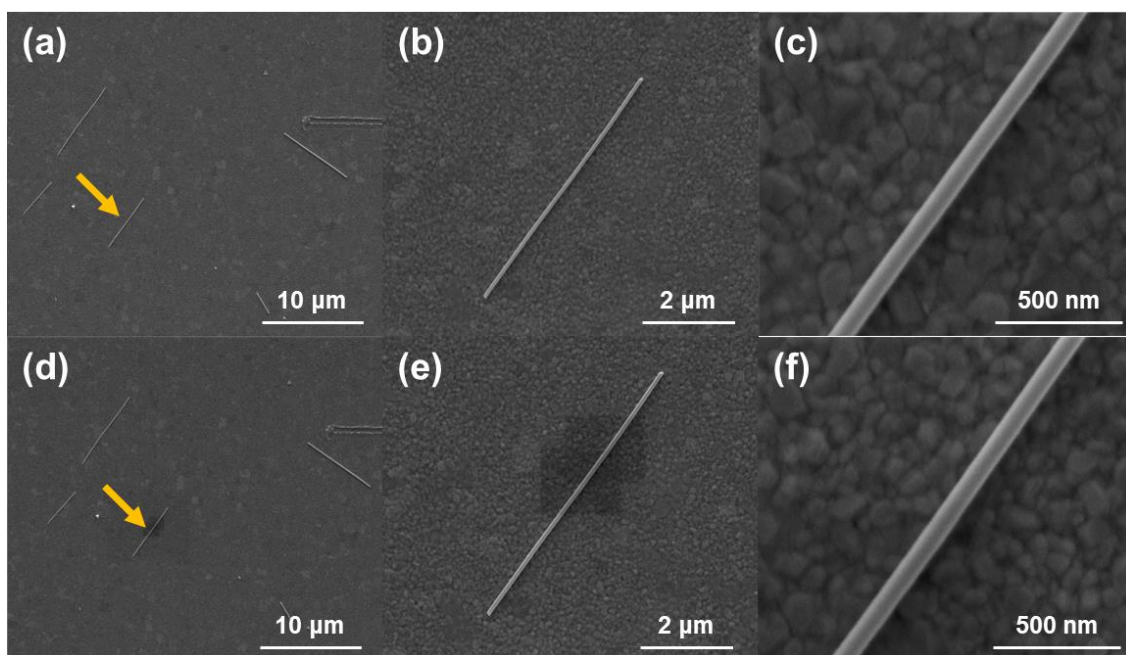


**Figure S1.** Photograph of a) bare Ag-NOF platform, b) ZIF-8-coated Ag-NOF platform, and c) ZIF-8-removed Ag-NOF platform.

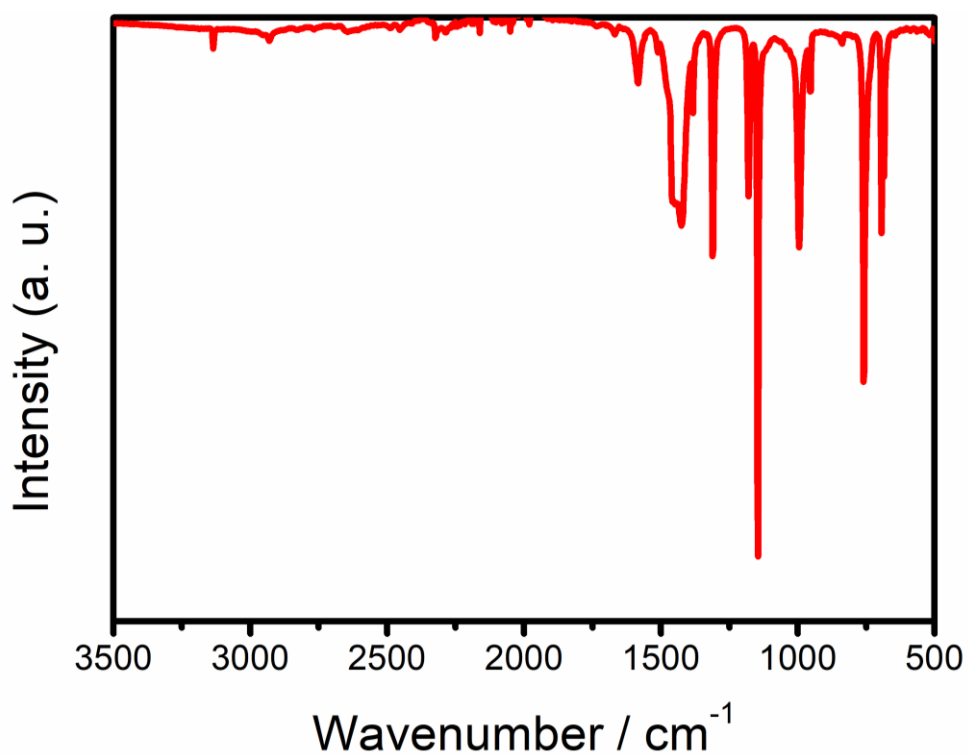
Composition	Final pH
1. ZIF-8 solution	-
2. Deionized water (pH 7.03)	9.06
3. Deionized water (pH 5.79)	9.09
4. Phosphate buffered saline (PBS, pH 7.4)	9.01
5. Phosphate buffer (PB, pH 5.8)	6.00



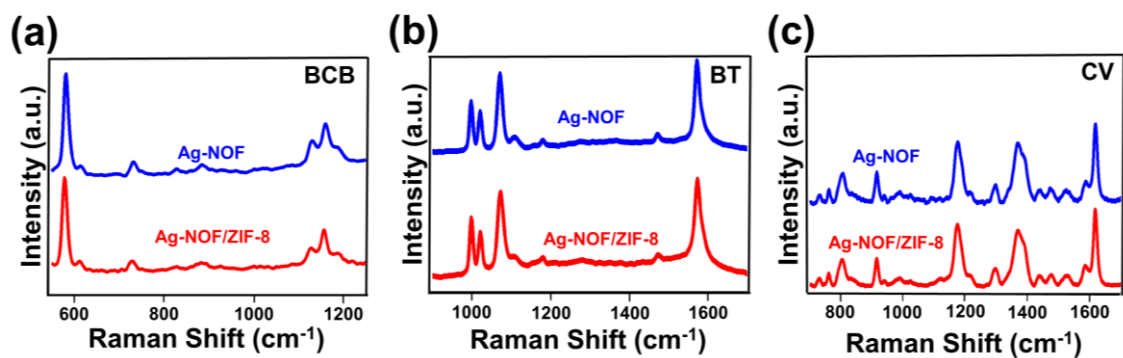
**Figure S2.** Photographs of ZIF-8 crystal solution (1) and dissociated ZIF-8 solutions after mixing with buffers (2-5).



**Figure S3.** a) SEM images obtained from bare Ag-NOF structure before ZIF-8 coating. b), and c) show magnified SEM images for a). d) SEM image obtained from Ag-NOF/ZIF-8 structure after removal of ZIF-8. e), and f) show magnified SEM images for d).



**Figure S4.** FTIR spectrum of ZIF-8. Small peaks at  $3,134\text{ cm}^{-1}$  and  $2,929\text{ cm}^{-1}$  are attributed to the aromatic and the aliphatic C–H stretching of imidazole, respectively. The peak at  $1,584\text{ cm}^{-1}$  is assigned to the C=N stretching mode. Convoluted bands at  $1,350 \sim 1,500\text{ cm}^{-1}$  are associated with the entire ring stretching. Bands at  $900 \sim 1,350\text{ cm}^{-1}$  are assigned to in-plane ring bending.



**Figure S5.** SERS spectra of a) BCB, b) BT, and c) CV measured with Ag-NOF platforms (blue) and with the same Ag-NOF platforms (red) after coating and removal of MOF.